

Adoption of Drury Lane as a Parish by-road

For consideration by the Parish Assembly
on 26 June 2019 at 7pm

PARISH OF ST HELIER

P.04/2019



PROPOSITION

THE PARISHIONERS are asked to take into consideration and if deemed advisable to approve:

the recommendation of the Roads Committee and Procureurs du Bien Public to transfer Drury Lane to the Parish as a by-road; the Assembly to instruct the Connétable and at least one Procureur du Bien Public to pass a contract with Jersey Development Company paying all reasonable legal costs.

Report

Background

The Parish has received a request from Jersey Development Company (JDC) for the Parish to adopt Drury Lane, following completion of the 'College Gardens' development.

Adoption of the road will enable ratepayers living on or using the road to benefit from Parish street cleansing services, as well as street lighting and policing.

The road has recently been resurfaced to a good standard, speed humps have been installed and street lighting will be installed prior to the Lane being transferred to the Parish (subject to Assembly approval).

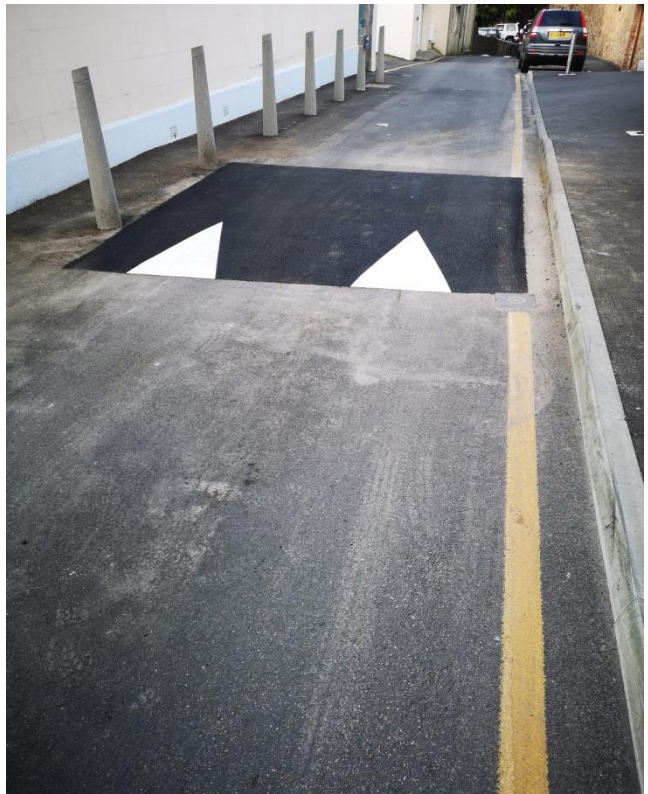
The main sewers running in Drury Lane will be maintained by the Public and not the Parish.

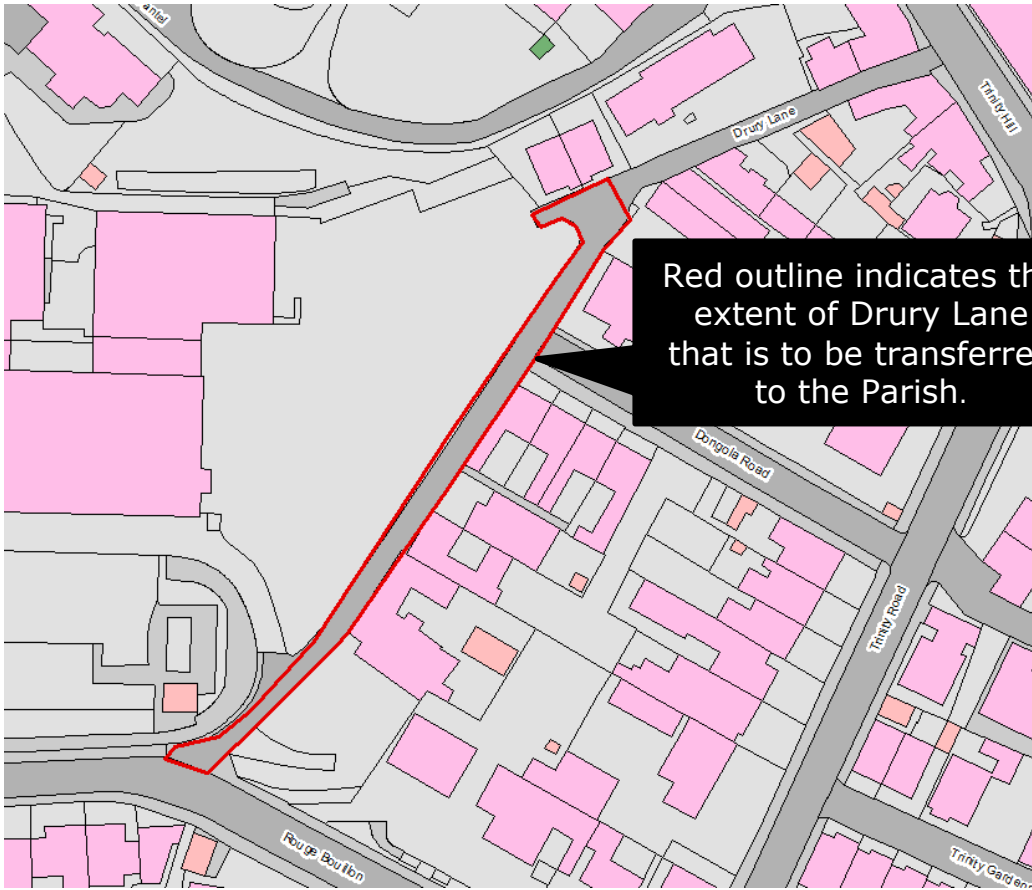
JDC will offer the benefit of a Collateral Warranty under its contract with the contractor for the statutory period of 10 years. This will give the Parish the right to pursue the contractor directly under the terms of the original main contract.

JDC confirms that there are no outstanding legal matters; however, as part of the transfer, the Parish will conduct due diligence on the Lane and check associated contracts to ensure that there are no risks for the Parish.

The Parish Assembly is asked to transfer Drury Lane from Jersey Development Company (JDC) to the Parish of St Helier as a Parish by-road.

Photographs

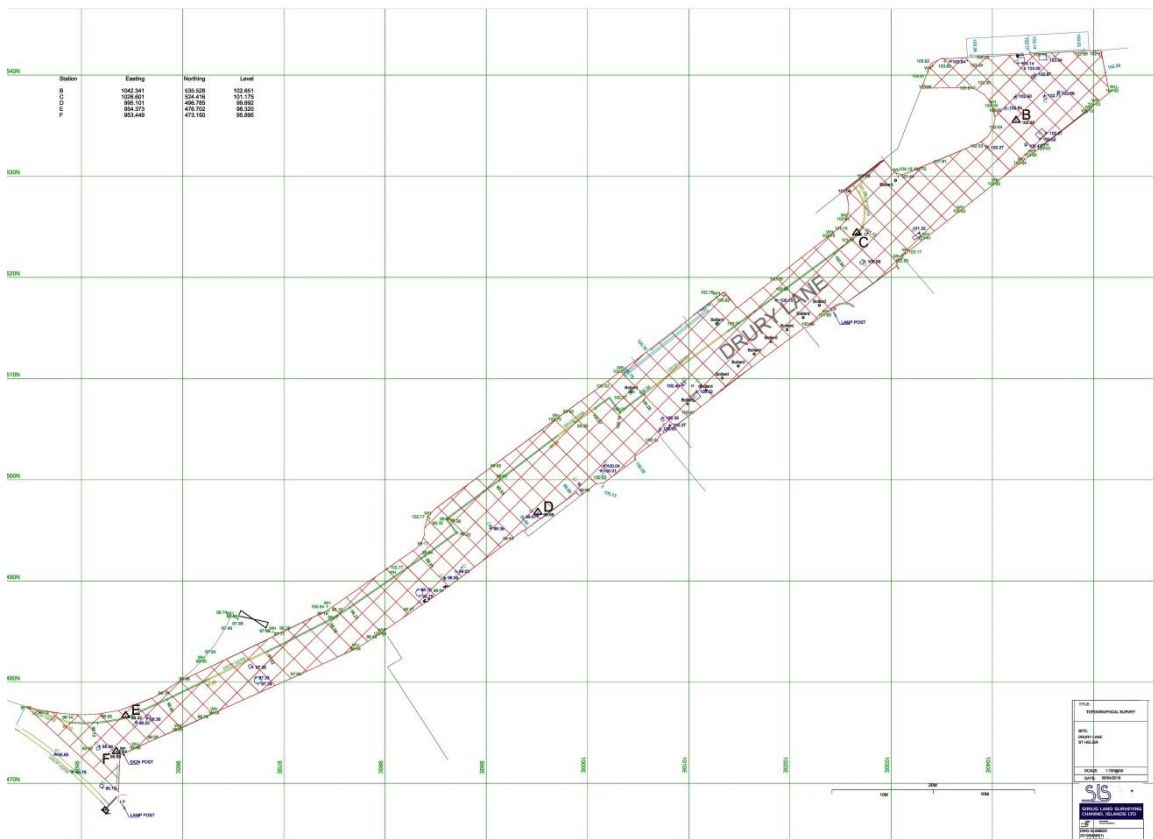




Red outline indicates the extent of Drury Lane that is to be transferred to the Parish.

The extent of the lane (approx. 776 sq m / 8,353 sq ft) to be transferred to the Parish is indicated with a red outline

Location Plan



Above plan shows hatched area representing area to be transferred